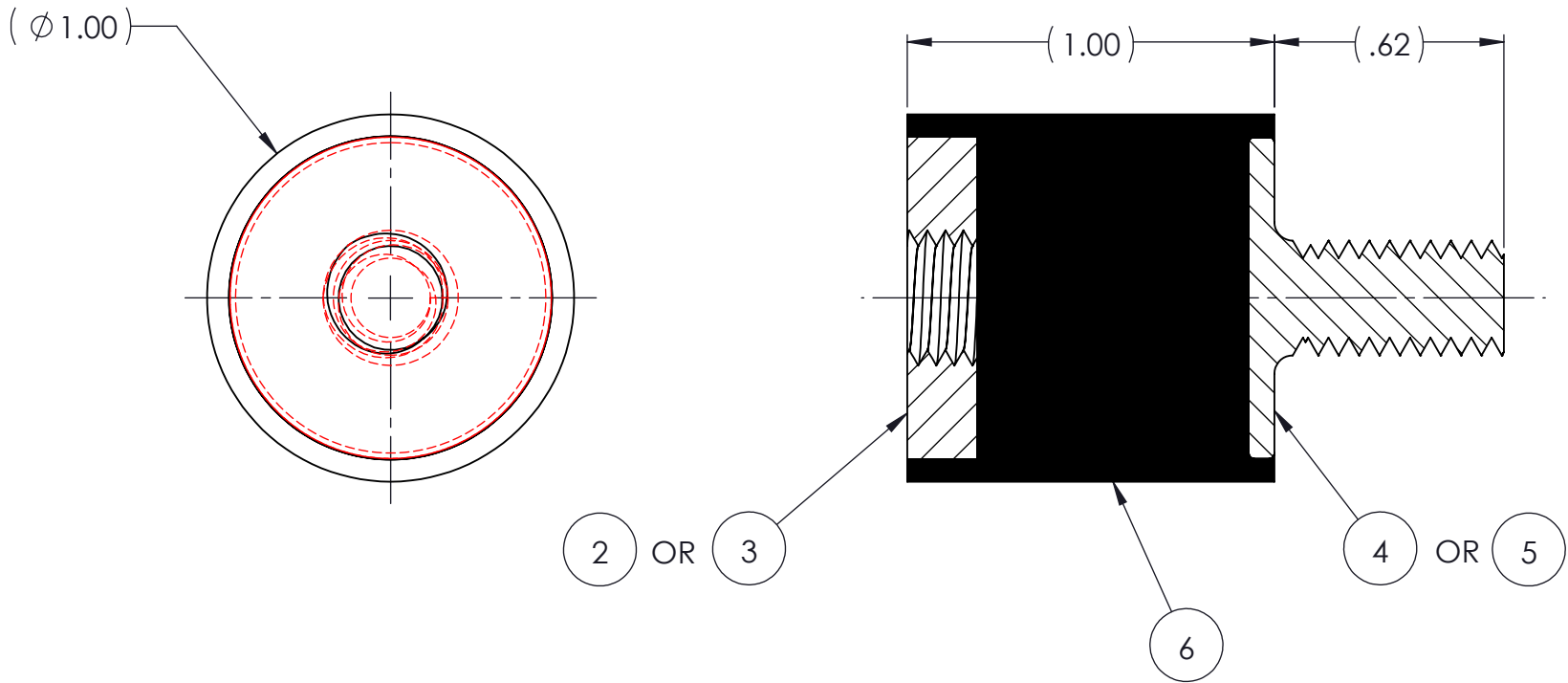
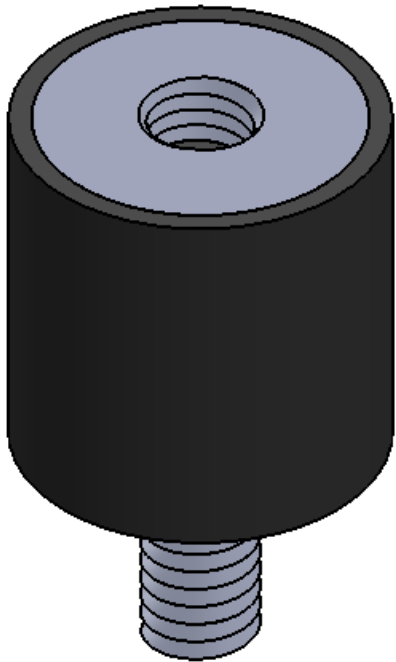


REVISIONS			
REV.	DESCRIPTION	DATE	APPROVED
1	INITIAL RELEASE OF DRAWING	8/27/2014	BS



NOTES:

- 1 MATERIAL: ELASTOMER AND DUROMETER OF 40, 50, 60 OR 70 TO BE SPECIFIED.
- 2 ALL DIMENSIONS ARE REFERENCE.
- 3 AVAILABLE WITH THREADS OF 5/16-18 UNC AND M8 X 1.25.

AR	ELASTOMER	K41-6		6
1	MK440	MK440		5
1	MK440-M8-5/8	MK440-M8-5/8		4
1	MK40018T	MK40018T		3
1	MK400M8T	MK400M8T		2
	K41	K41		1
QTY.	DESCRIPTION	PART NUMBER	MATERIAL OR NOTES	ITEM

PROPRIETARY AND CONFIDENTIAL <small>THE INFORMATION CONTAINED IN THIS DRAWING IS THE SOLE PROPERTY OF KARMAN RUBBER. ANY REPRODUCTION IN PART OR AS A WHOLE WITHOUT THE WRITTEN PERMISSION OF KARMAN RUBBER IS PROHIBITED.</small>	SIGNATURE		DATE	UNLESS OTHERWISE SPECIFIED: DIMENSIONS ARE IN INCHES TOLERANCES: .X = .XX = ± 0.031 .XXX = ANGLES = ±1° INTERPRET GEOMETRIC TOLERANCING PER: ASME Y14.5M-1994
	DRAWN	B. SENECAL	08/27/2014	
	CHECK	S. BROWN	08/27/2014	
	ENGR	B. SENECAL	08/27/2014	
	QA			
	STRESS			
	APPR			

KARMAN RUBBER
VIBRO-INSULATORS®
FOR CONTROLLING NOISE, SHOCK & VIBRATION

SIZE
B

CAGE CODE

DO NOT SCALE DRAWING

TITLE: K41 SERIES VIBRO-INSULATOR WWW.KARMAN.COM			
DWG. NO. K41		REV 1	
SCALE: 2:1	WEIGHT: 1.10 OZ.	SHEET 1 OF 1	